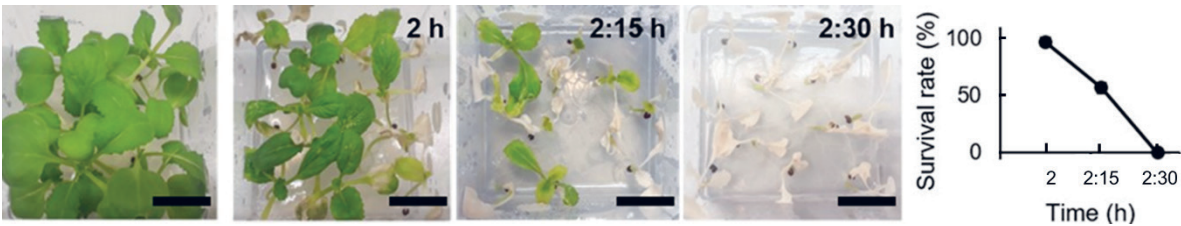


ON-LINE SUPPLEMENTARY MATERIAL

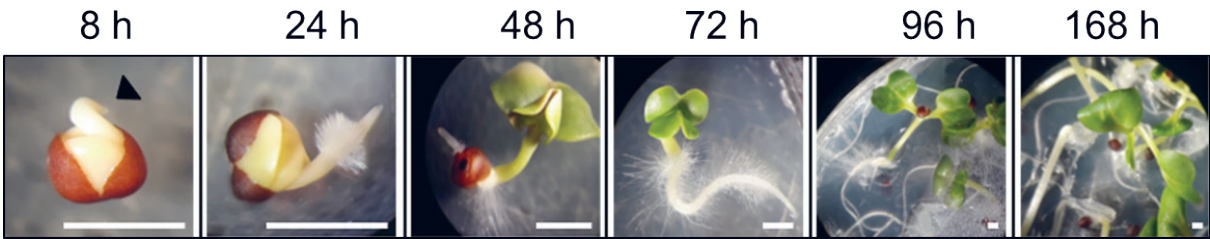
Tokić, M., Tkalec, M., Vitko, S., Salopek-Sondi, B., Ludwig-Müller, J., Bauer, N. Physiological and molecular response of *Brassica rapa* to moderate and extreme heat. Acta Botanica Croatica, DOI: 10.37427/botcro-2025-028.

On-line Suppl. Tab. 1. Gene specific primers used for qPCR and gene expression quantification.

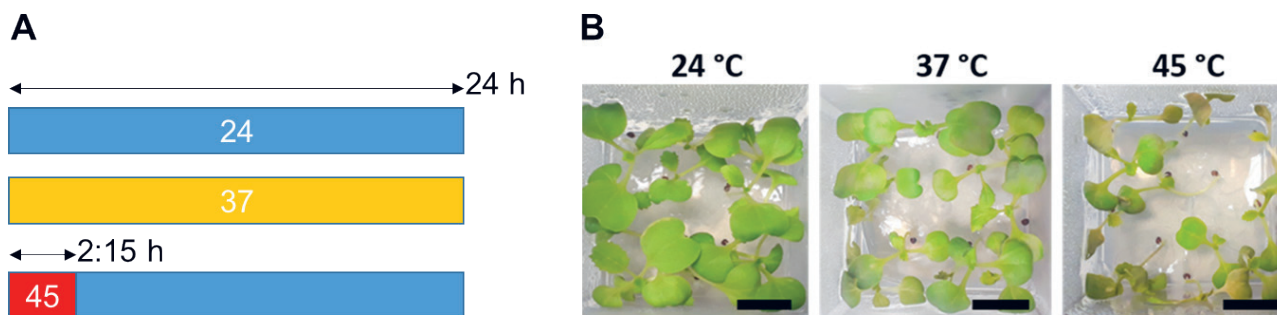
Gene	Primer sequence	Amplicon size (bp)
<i>HSFA7A</i> Bra012828.1	GTTTCTGTATCAGCTACTCCAG CATACCCTTGCATCTCCAGC	128
<i>HSFB2A</i> Bra029292.1	GGTAACATCTTTGGACTCATGTC CATACCCTTGCATCTCCAGC	109
<i>DREB2A</i> Bra009112.1	TTTTACAGACACGAAGCAGAGC GTCACTACCATCTTGTGCCTC	142
<i>OGIO</i> Bra028284.1	CAGTATCGTAGCTGAGGTAGC AGAACGGAACACATACTTGACTC	121
<i>PUX</i> Bra026205.1	CAAACCCAAAGAGGTTGTTGC TCATGTCGTTGTCTTCCAAGG	86



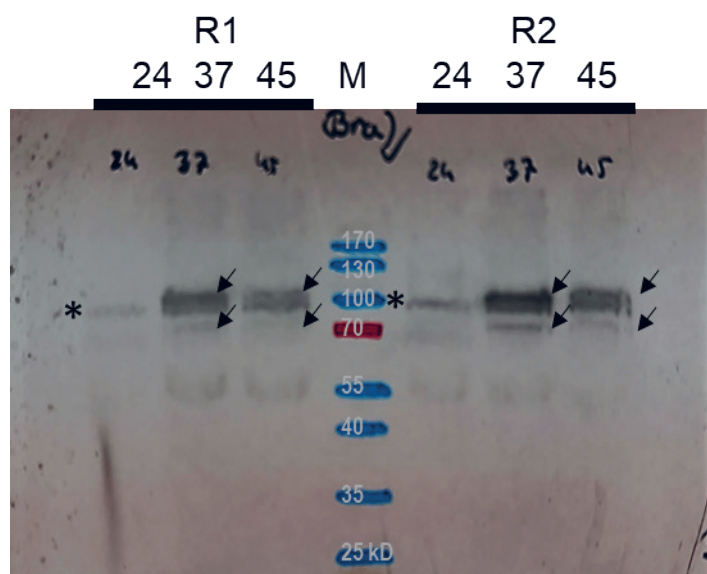
On line Suppl. Fig. 1. Heat stress tolerance of *Brassica rapa* seedlings exposed to 45 °C. Seedlings were exposed to 45 °C for 2 h, 2 h and 15 min (2:15) or 2 h and 30 min (2:30). Control plants were kept at 24 °C. Pictures were taken and survival rate determined following a seven-day recovery period. Green seedlings still able to produce new leaves were scored as viable. Each biological replicate consisted of 15 seedlings. Data represent the average of three replicates with standard deviations denoted by vertical bars. Scale bar = 2 cm.



On line Suppl. Fig. 2. *Brassica rapa* seedling germination dynamics. After sterilization, seedlings were sown on Murashige and Skoog medium, stratified for 72 h on 4 °C and incubated at 24 °C in long day conditions (16 h light at 150 $\mu\text{mol m}^{-2} \text{s}^{-1}$ and 8 h dark). Arrow denotes radicle emergence. Scale bar = 2 mm.



On line Suppl. Fig. 3. *Brassica rapa* seedling heat treatments and morphology after heat stress. A) Control seedlings were exposed to 24 °C while heat treatments were at 37 °C for 24 h or at 45 °C for 2 h and 15 min followed by recovery at 24 °C. B) Seedlings were photographed 24 h after the start of the treatments. Scale bar = 1 cm.



On line Suppl. Fig. 4. HSP90 immunodetection –original, uncropped membrane. Seedlings were treated continuously at 37 °C for 24 h or exposed to 45 °C for 2 h and 15 min followed by recovery. Control plants were kept at 24 °C. Two biological replicates (R1 and R2) are presented, each consisted of 12 seedlings. The asterisks indicate HSP90 present at control conditions and black arrows indicate heat-induced HSP90 forms.